



2021 State of Custom Software Delivery Report

Our clients are market leaders and innovative pioneers.

Honeywell

MONSTER

amadeus

 **tmpworldwide**
THE DIGITAL BRAND AUTHORITY


PerkinElmer

**wex**

kcare

 Connecting Point
MARKETING GROUP

LIMRA

 **TRADEPORT**
RETURNS, MANAGED.

 **SENSITECH**

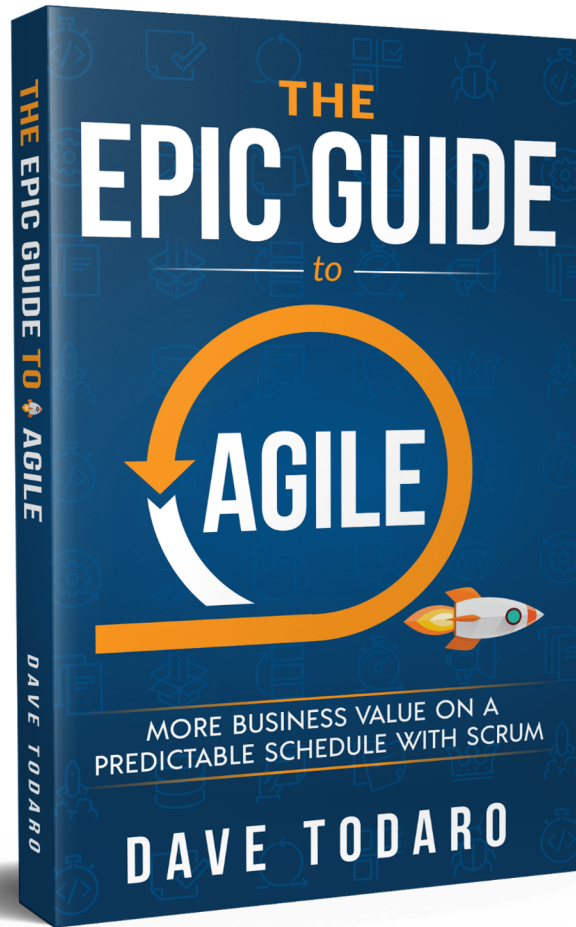
 **EPILEPSY
FOUNDATION**
New England

CREATIVE  **iINFO**
SYSTEMS

 **FLORATINE**

Pxl

 **ASCENDLE**



And we wrote
the book.

Agenda

- Panelist Introductions
- Respondent Profiles
- Leadership Profiles
- Key Drivers
- Key Results
- Scaled Frameworks
- Vendor Support

Tina Reynolds

VP of Operations
Ascendle



Tom Schwendler

Product Owner
Ascendle



Susannah Parnin Mitchell

Product Lead
Ascendle



The background is a complex collage of financial data visualizations. It includes a bar chart with blue bars of varying heights, a line graph with a fluctuating white line, a circular gauge showing '50%', and various tables of numbers. The overall color scheme is blue and white, with a dark grey semi-transparent rectangle in the center containing the text.

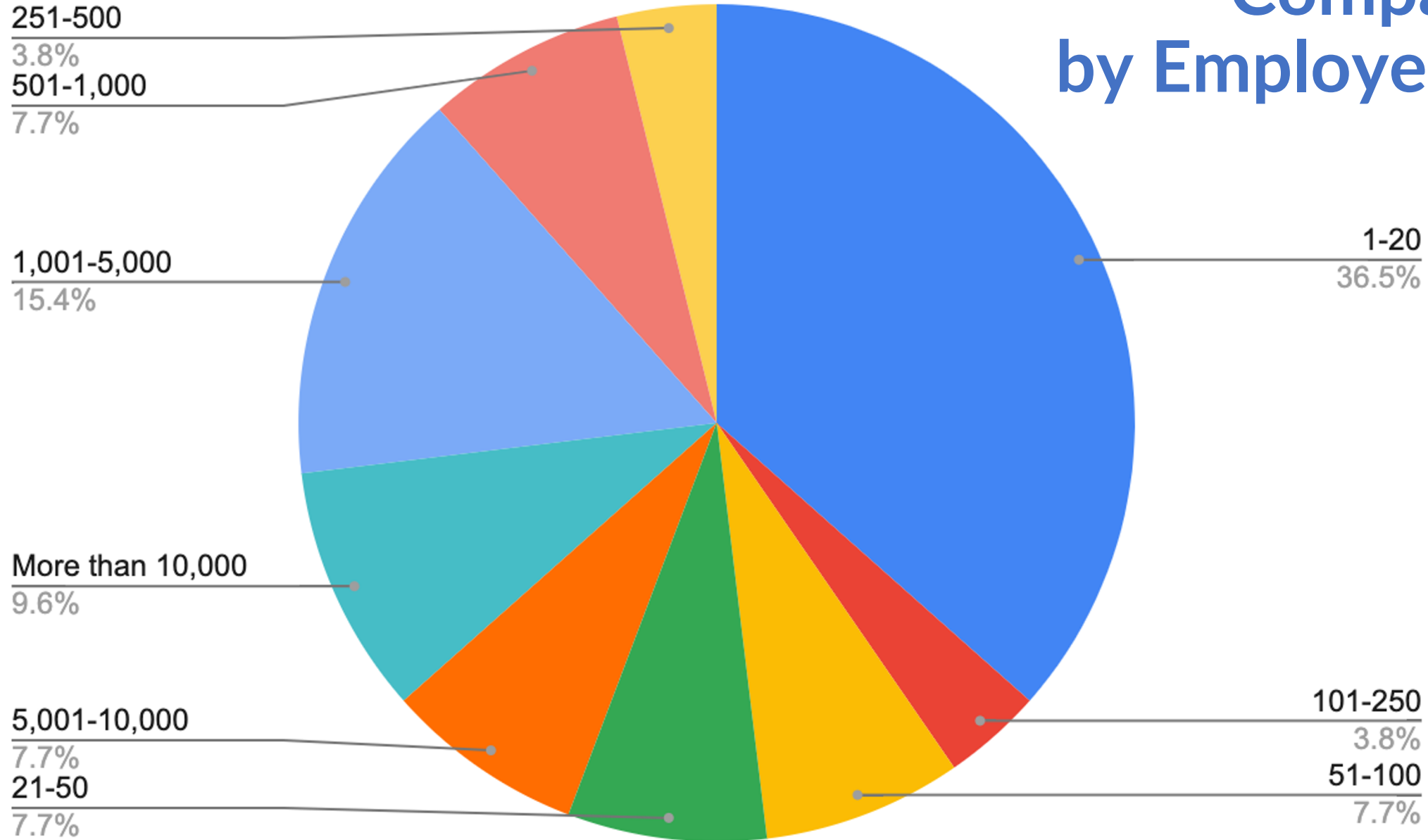
Respondent Profiles

Company Size

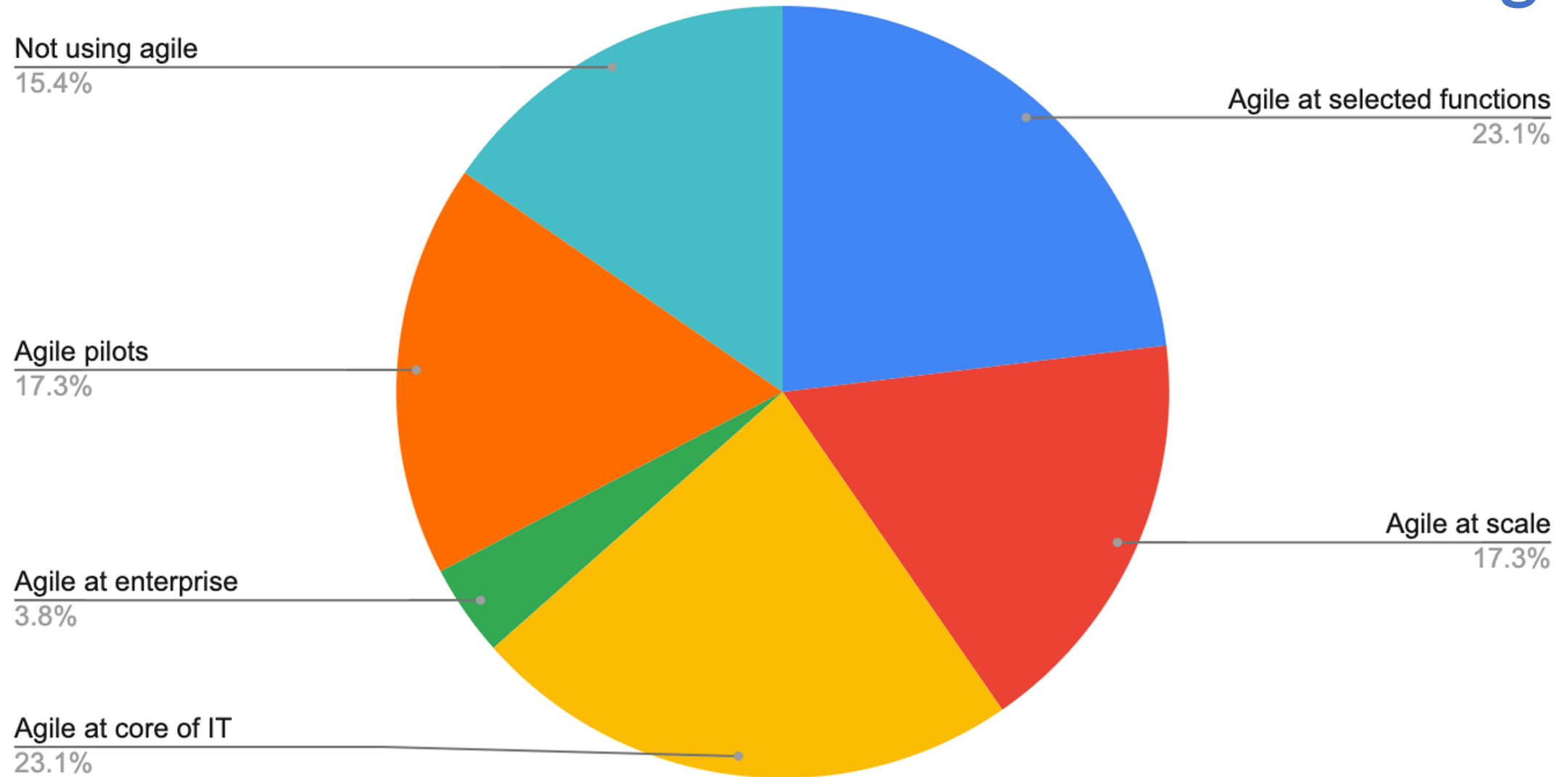
Agile Usage

Agile Experience

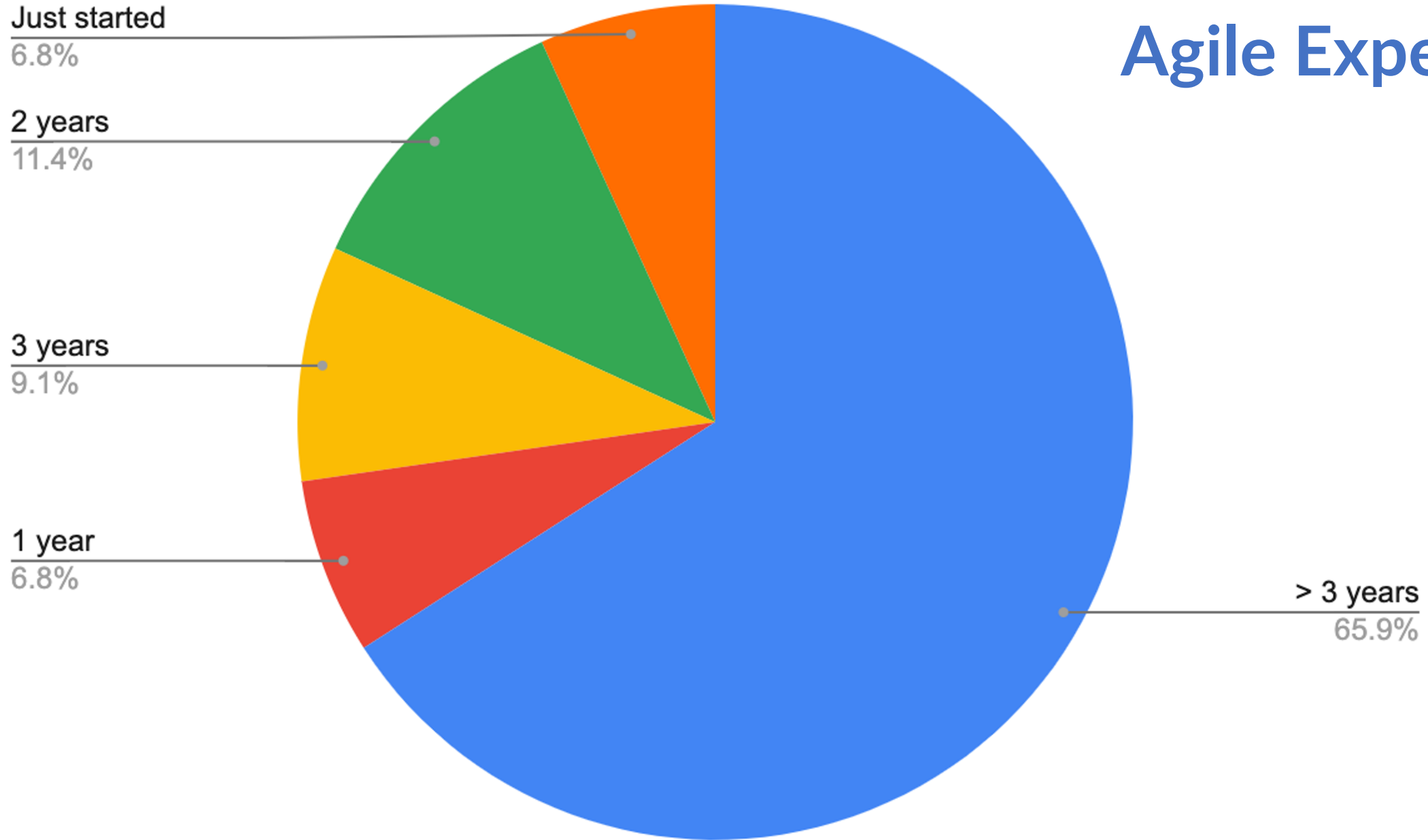
Company Size by Employee Count



Breadth of Agile

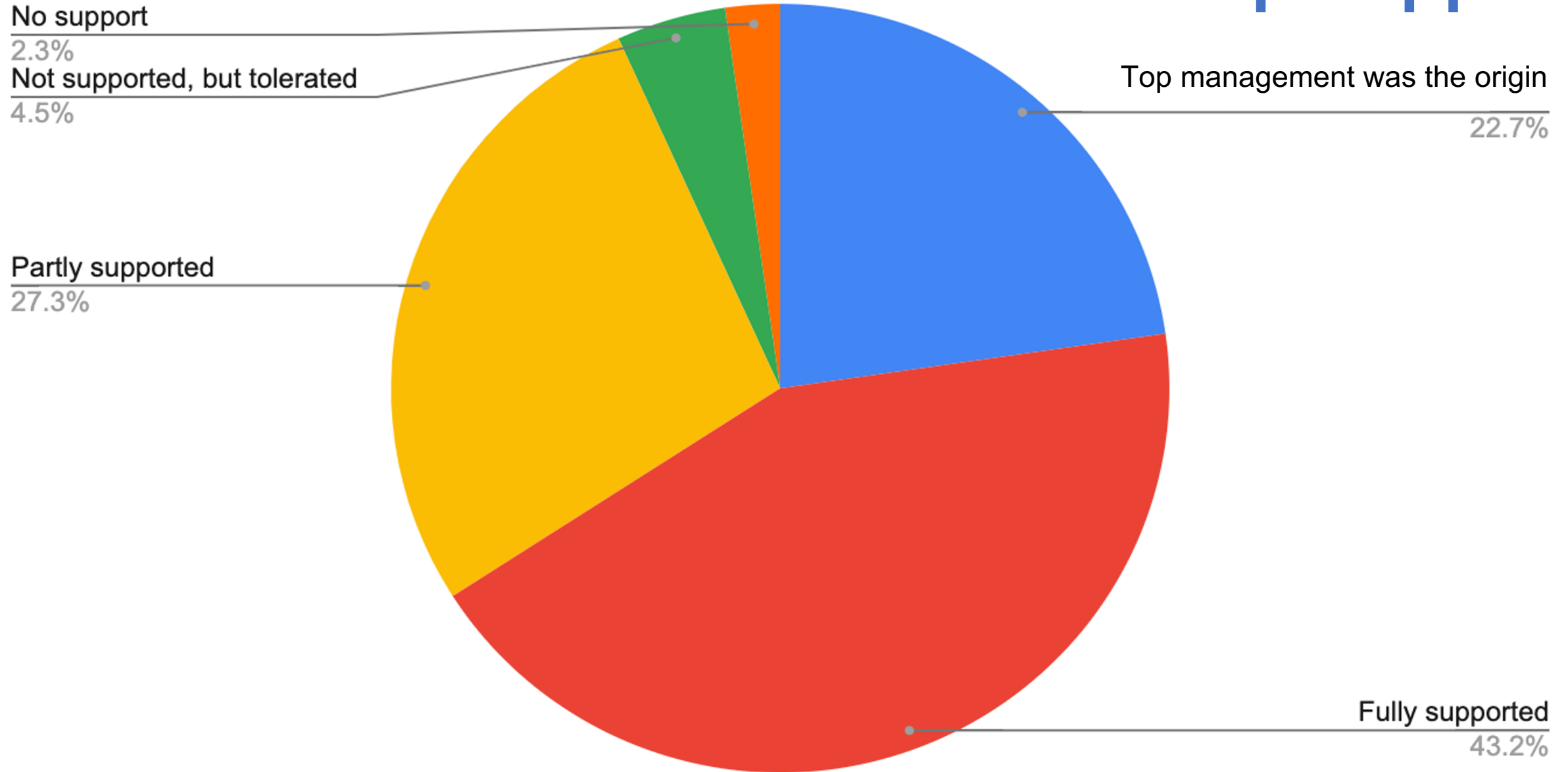


Agile Experience





Leadership Support



Agile Driver Results



Faster product delivery



Fast & continuous improvement



Increased flexibility

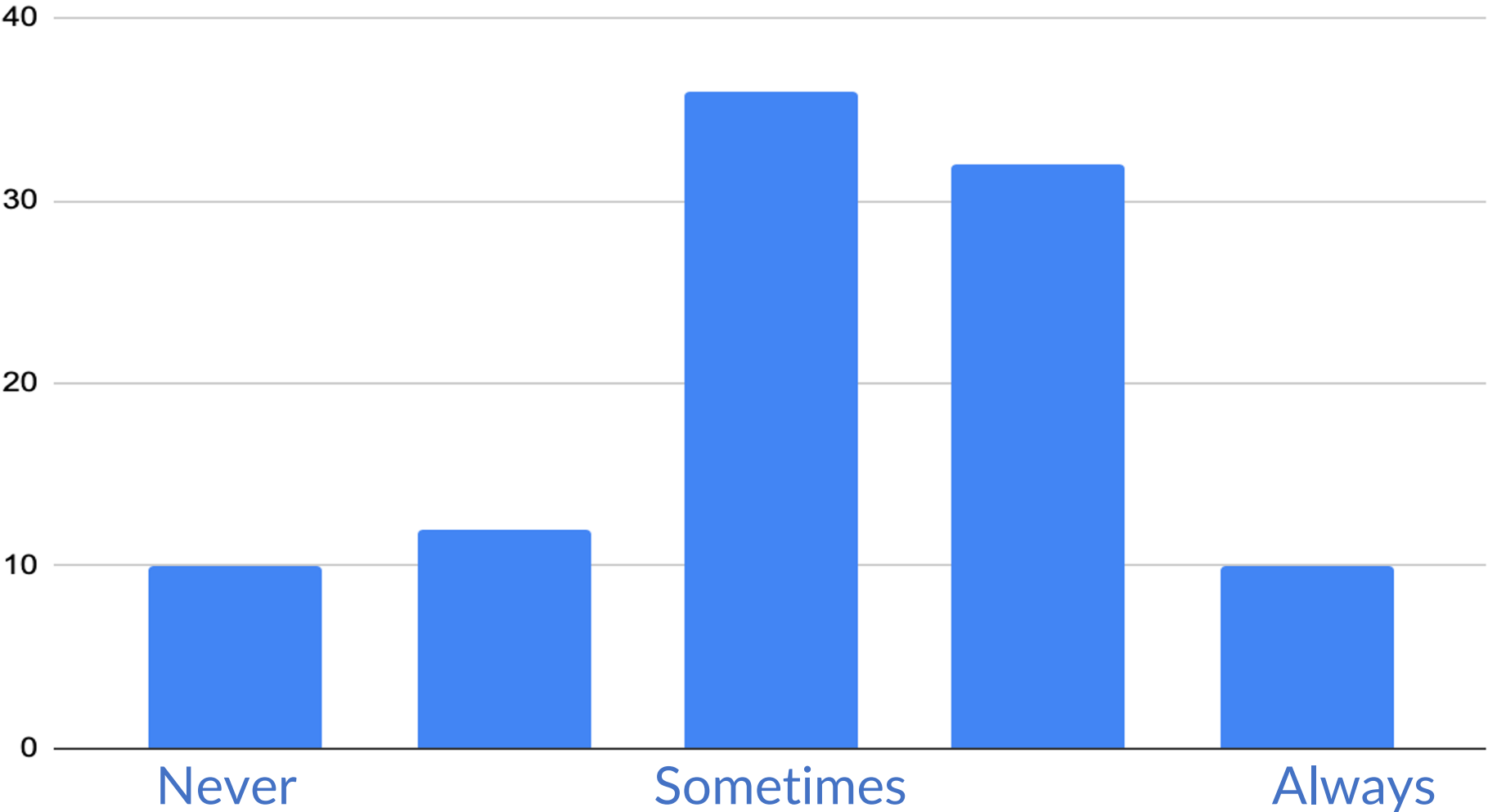


Solve silos between business and IT



Needed for digital-first agenda

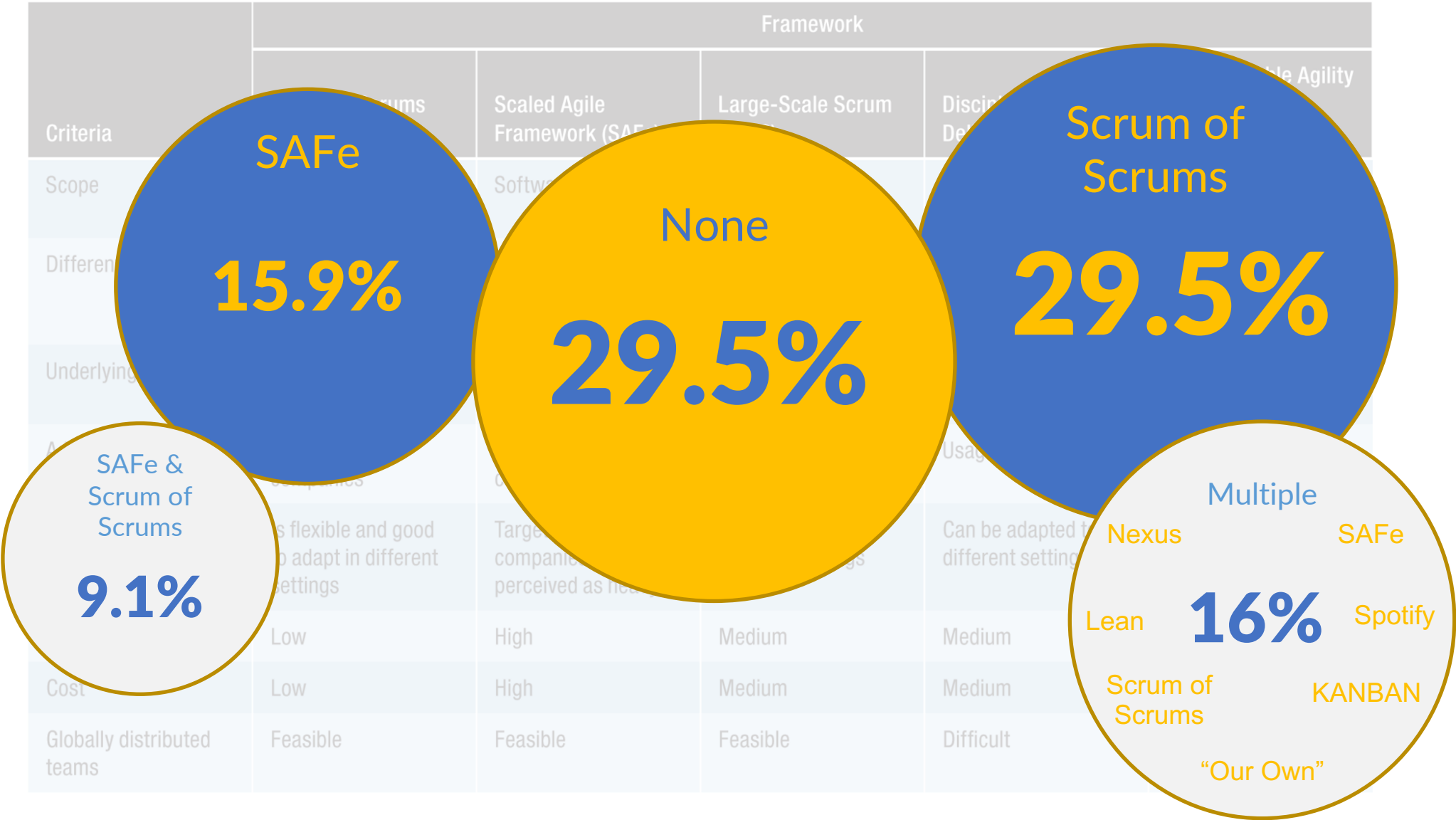
Percentage of Respondents Who Said They Ship Faster Than Their Cohorts



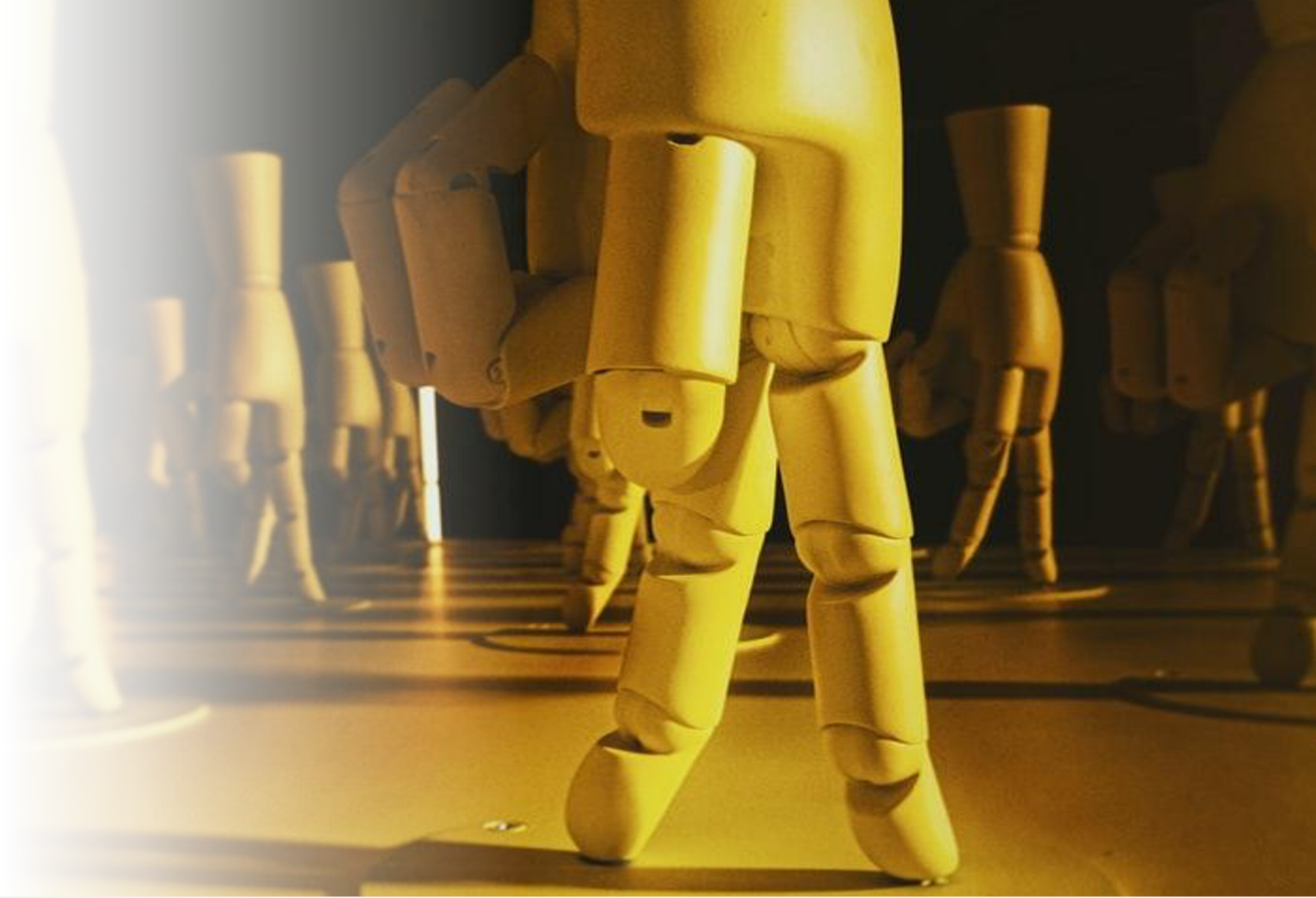
Scaled Frameworks

“What scaled frameworks are at use in your organization?”

Scaled Frameworks



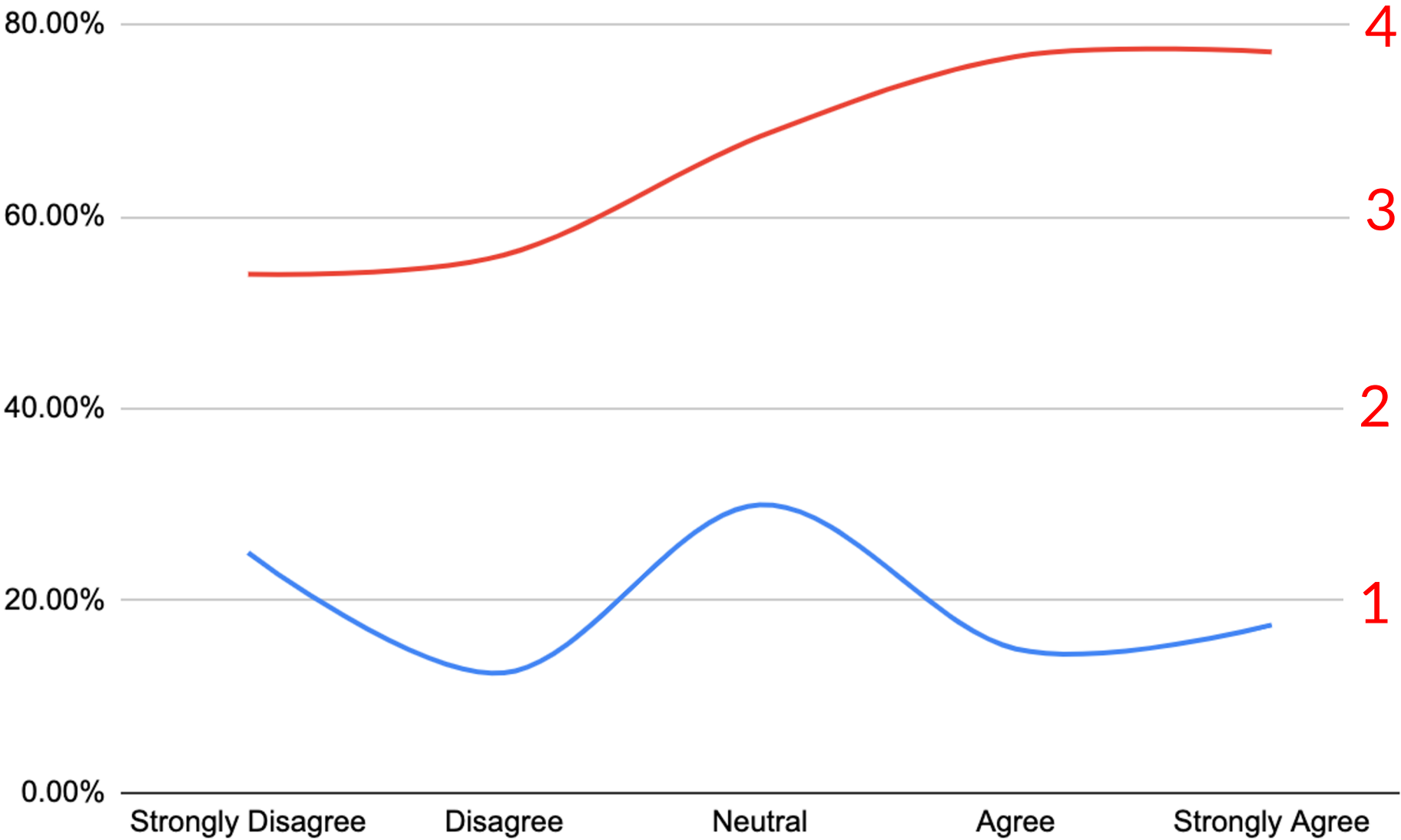
Vendor Alignment



Agree/Disagree: We choose our suppliers based on how well their agility aligns with ours.

Agree/Disagree: We choose our suppliers based on how well their agility aligns with ours

Please rate your organization's ability to ship faster than similar companies (1-5)



Companies that chose suppliers based on agile alignment reported greater ability to ship software faster.

Looking to the Future

Expect Agile at
Scale or Enterprise
Level

67%

Expect to Have
Expanded Agile

90%





**Check
Your Mail!**

Thank You!

